

PART OF THE SE.1/4, OF SECTION 7, T.5N., R.2W., S.L.B. & M.

398

PENMANS ACRES

IN HOOPER CITY

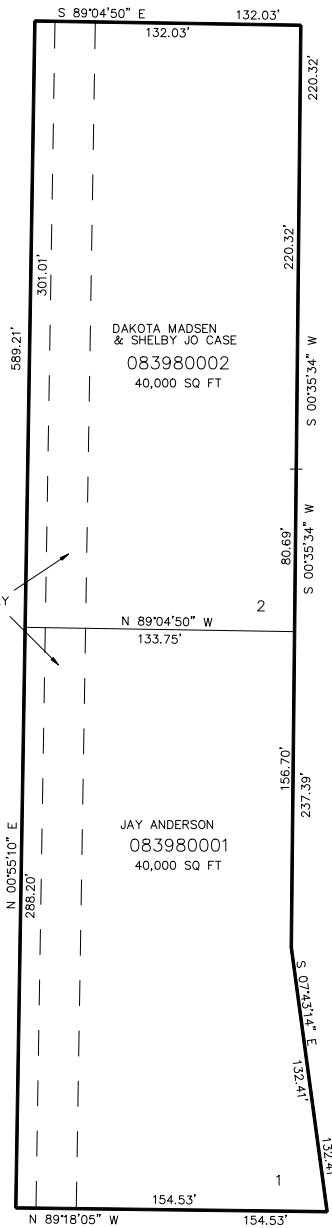
TAXING UNIT: 376

SCALE 1" = 50'

SEE PAGE 45

SEE PAGE 45

EXISTING 20' GRAVEL PRIVATE RIGHT-OF-WAY



FOR COMPLETE ENG DATA SEE
ORIGINAL DEDICATION PLAT IN
BOOK 57, PAGE 09 OF RECORDS.

10' UTILITY & DRAINAGE EASEMENTS EACH
SIDE OF PROPERTY LINES AS INDICATED
BY DASHED LINES EXCEPT AS OTHERWISE
SHOWN.

4600 SOUTH STREET

SEE PAGE 45

FOR TAX PURPOSES ONLY

BK 12-02